

MFC0033 Sitka-Haida Gwaii-Port Hardy POI Excursion

We are departing Sitka Alaska and heading southward. We'll cross and weave through many islands in Alaska: Baranof, Coronation and the many islands that cluster the Prince of Wales. Then continue our voyage crossing the Dixon Entrance into BC Canada where we will visit Graham and Moresby Islands and explore the many points of interest locations along the Haida Gwaii, the Hecate Strait, and Queen Charlotte Sound before finally reaching our destination of Port Hardy BC.

This POI excursion has 22 flight legs most of which are not too long but have many interesting stops along the way. You will require some concentration to meet the challenge of this POI excursion.

Aircraft: You'll require an amphibian single prop fixed wing or amphibian heli to be able to navigate the landings in this trip. Multi and/or Turbo is also permitted but be very careful!!!

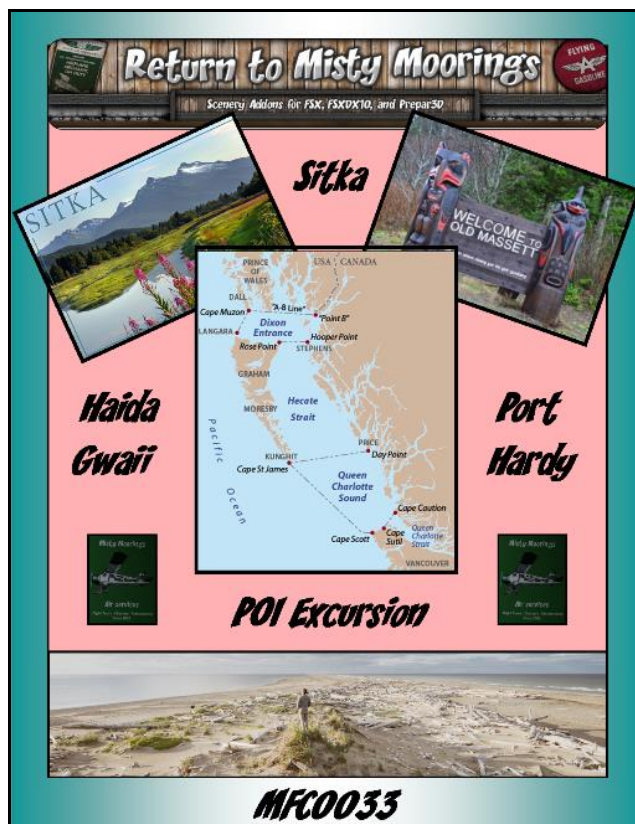
Tour Flight Leg Rating Conditions: "6Ax":

6=Max landing rate is -600fpm,

A=Autopilot and/or GPS use permitted: (but not recommended).

x-# of Stop-overs in the flight leg*. Watch the flight legs closely as you progress through each leg of the excursion.

The Tour download for this excursion is available and a must. It is in the Tour downloads section which contains the all the tour details, scenery requirements, stop-over locations (and there are many), flight plans, as well as the award for completion so make sure you obtain the tour download for all of the tour specifics.



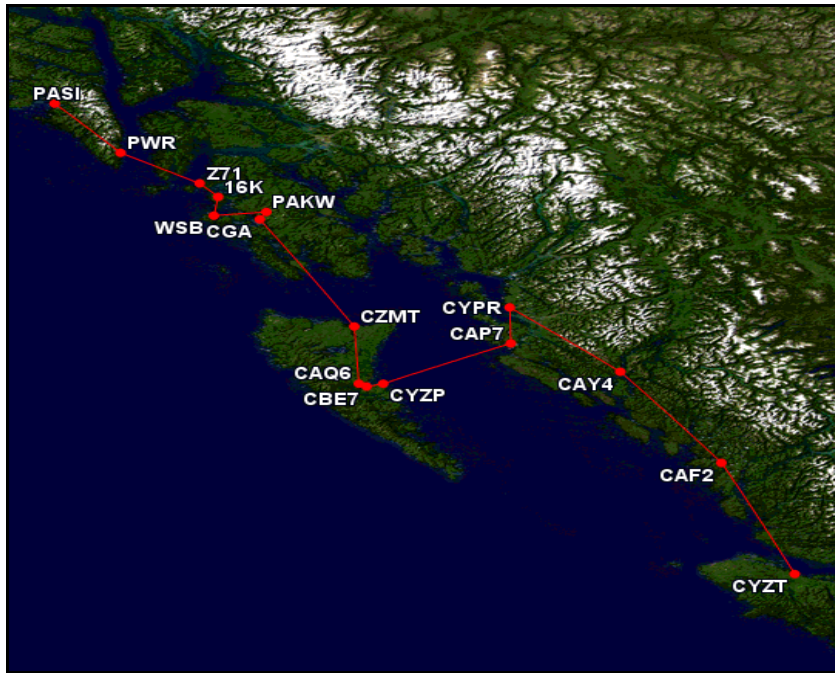
MISTY FLYING CLUB – MFC0033 SITKA-HAIDA GWAII-PORT HARDY POI EXCURSION: QUICK ROUTE (MAJOR AIRPORTS)

Quick Route: PASI-PWR-Z71-16K-WSB-PAKW-CGA-CZMT-CAQ6-CBE7-CYZP-CAP7-CYPR-CAY4-CAF2-CYZT

<http://www.gcmap.com/>

<http://myflightbook.com/logbook/Public/MapRoute2.aspx>

MISTY FLYING CLUB – MFC0033 SITKA-HAIDA GWAII-PORT HARDY POI EXCURSION: ROUTE MAPS



MISTY FLYING CLUB – MFC0033 SITKA-HAIDA GWAII-PORT HARDY POI EXCURSION: TOUR CONDITIONS

Conditions/Restrictions to successfully complete this VA Exploration:

There is only one, well two restrictions that applies while flying the flight legs of this tour. All landings, including stop-overs, must not exceed a landing rate of greater than -600fpm. If there are four stop-overs in a flight leg – all landing must be -600fpm or under as not to damage the aircraft and the second restriction: PLEASE DON'T CRASH! As our aircraft are getting more and more expensive to upkeep and we don't want any injuries this year!

Standard .pln FP files provided so you can fly the route as per the flight plan prepared which include all the airport locations as well as all the waypoints outlined by the fp route. (No sky vectors in this one, just a tad too complex to get all the fp waypoints into a sky-vector map).

Keep close eye out for all the various scenery pieces from cabins to airstrips to lighthouses etc etc. There is a lot to see in this trip!

MISTY FLYING CLUB – MFC0033 SITKA-HAIDA GWAII-PORT HARDY POI EXCURSION: FLIGHT LEG DETAILS

Leg: #	Departure Airport Name/ ICAO Departure Autopilot NOT recommended (SPB/water moorings indicated by *)	Stop-over Locations/ ICAO * All stop-over landing rates, where applicable, are accepted to a max of -600fpm. (SPB/water moorings indicated by *)	Destination Airport Name/ICAO Destination (SPB/water moorings indicated by *)	Airline ID MFC	Flight # (*): * All stop-over landing rates, where applicable, are accepted to a max of -600fpm. (*) For Tour Leg use the Tour Center generated Flight legs#. If flying the single legs use flight # as listed below in KaCars:	Aircraft	Distance (Nautical Miles)	Min Alt (VFR) (Feet)
1	Sitka (PASI)	1. Samsing Cove Cabin (SMCV)* 2. Blue Lake Hydro (PP16)* 3. Redoubt Lake Cabin (REDT)* 4. Kanga Bay Cabin (KBUC)*	Biorka Isiland VOR Dock (TF03)*	MFC	T00397-6A4	C185	38.7	2500
2	Biorka Isiland VOR Dock (TF03)*	1. Seven Fathom Bay Cabin (SFBC)* 2. Avoss Lake Cabin (AVOS)* 3. Davidof Lake Cabin (DVOF)* 4. Plotnikof Lake Cabin (PLOT)*	Port Walter SPB (PWR)*	MFC	T00398-6A4	C185	67.4	3500
3	Port Walter SPB (PWR)*	1. Port Alexander SPB (AHP)* 2. Egg Harbor Fish Camp (EHFC)* 3. Cape Decision Lighthouse (TF01)* 4. Cape Pole SPB (Z71)*	Edna Bay Dock (TF04)*	MFC	T00399-6A4	C185	66.8	3500
4	Edna Bay Dock (TF04)*	1. Port Alice SPB (16K)* 2. Steamboat Bay SPB (WSB)* 3. Point Amagura Cabin (PTAM)* 4. Klawock (PAKW)	Craig SPB (CGA)*	MFC	T00400-6A4	C185	57.1	3500
5	Craig SPB (CGA)*	1. Port Refugio BBQ (REFG)* 2. Hydaburg SPB (HYG)* 3. Reynolds Creek Hydro (PP10)* 4. Summit Lake Resort (SUMM)*	Josephine Lake Cabin (JOSE)* (SAVE SIM POSITION)	MFC	T00401-6A4	C185	46.0	3500
6	Josephine Lake Cabin (JOSE)*	1. Portage Bay Cabin (PORB)* 2. Dora Bay Log Transfer (DBLT)* 3. Hang 'Em High Strip (HEHS) 4. Dan's Hideaway Cabin (DAHC)*	Miller Lake Cabin (MLLR)* (SAVE SIM POSITION)	MFC	T00402-6A4	C185	39.3	3500
7	Miller Lake Cabin (MLLR)*	1. Aiken Creek Camp (AIKC) 2. Luelia Lake Cabin (LUEL)* 3. Kegan Cove USFS Cabin (KCUC)* 4. High Lake USFS Cabin (HLAK)*	Port Bazan Cannery (PBAZ)* (SAVE SIM POSITION)	MFC	T00403-6A4	C185	62.7	4500
8	Port Bazan Cannery (PBAZ)*	1. Essowah Lake Cabin (ESSO)* 2. Nina Cove (NINC)* 3. Klinkwan Fish Camp (KLIN)* 4. Hunter Bay Cannery (HUNT)*	Fleet Bay Parts Dock (FBPD)* (SAVE SIM POSITION)	MFC	T00404-6A4	C185	54.5	3500
9	Fleet Bay Parts Dock (FBPD)*	1. Langara Point Light (LANG)*	Masset (CZMT)	MFC	T00405-6A1	C185	81.1	1500

Misty Flying Club – MFC0033 Sitka-Haida Gwaii-Port Hardy POI Excursion

10	Masset (CZMT)	1. Rose Point Camp (RPTC)* 2. Roadside Cabin (RDSD)*	Sewell Airstrip (PF24)	MFC	T00406-6A2	C185	77.1	2500
11	Sewell Airstrip (PF24)	1. Masset Inlet USFS Cabin (MASS)* 2. Mount Matlock Cabin (MTMA)* 3. Yakhoun Lake Cabin (YAKH)* 4. Queen Charlotte City (CAQ6)*	Alliford Bay Seaplane (CBE7)*	MFC	T00407-6A4	C185	70.1	3500
12	Alliford Bay Seaplane (CBE7)*	1. Sandspit Airport (CYZP) 2. Moresby Camp (MORB)* 3. Prayer Lake Cabin (PL01)*	Fairfax Lake Campsite (FFAX)* (SAVE SIM POSITION)	MFC	T00408-6A3	C185	59.1	4500
13	Fairfax Lake Camps(FFAX)*	1. Ninstints (Nans Dins) (DINS)*	Jedway Seabase (PF26)*	MFC	T00409-6A1	C185	57.8	3500
14	Jedway Seabase (PF26*)	No stop overs	Sandspit Airport (CYZP)	MFC	T00410-6A0	C185	61.5	1500
15	Sandspit Airport (CYZP)	1. Bonilla Island Light Station (BILH)* 2. Kitkatla Seaplane (CAP7)* 3. Sea Rescue 2 (SEA2)*	Lucy Island Light Station (LUCY)* (SAVE SIM POSITION)	MFC	T00411-6A3	C185	101.6	3500
16	Lucy Island Light Station (LUCY)*	1. Triple Island Light Station (TILS)* 2. Sea Rescue 1 (SEA1)*	Prince Rupert (CYPR)	MFC	T00412-6A2	C185	38.9	3500
17	Prince Rupert (CYPR)	1. Osland Harbour (OSLA)* 2. Quiet Nights Cabin (QUIN)*	Dougs Outfitters Lakes End (PF29)	MFC	T00413-6A2	C185	47.2	5500
18	Dougs Outfitters Lakes End (PF29)	1. Dougs Outfitters Base (DOUG)* 2. Quall River Fish Camp (PF09) 3. Hartley Bay (CAY4)*	Khutze River (PF17)*	MFC	T00414-6A3	C185	82.4	3500
19	Khutze River (PF17)*	1. Canoona Fish Camp (CANO)* 2. Boat Bluff Light Station (BBL)*	Klemtu First Nations (KLE1)* (SAVE SIM POSITION)	MFC	T00415-6A2	C185	40.7	3500
20	Klemtu First Nations (KLE1*)	1. McInnes Island Light Sta. (MILS)* 2. Ivory Island Light Sta. (IILS)* 3. Bella Bella (Campbell I) (CAF2) 4. Dryad Point Light Sta. (DPLS)*	Whiskey Cove SPB (PF22)*	MFC	T00416-6A4	C185	51.0	3500
21	Whiskey Cove SPB (PF22)*	1. NAC Sharp Cone (NACA)	Addenbroke Island Light House (AIL1)* (SAVE SIM POSITION)	MFC	T00417-6A1	C185	61.2	3500
22	Addenbroke Island Light H (AIL1)*	1. Pine Island Lighthouse (PIL1)	Port Hardy Airport (CYZT)	MFC	T00418-6A1	C185	60.7	3500
Total Miles: 1323.3 nm								

We hope that you enjoy flying this MFC0033 Sitka-Haida Gwaii to Port Hardy POI Excursion:



RTMM Scenery Website: <http://return.mistymoorings.com/>
Misty Flying Club: <http://www.mistymooringsflyingclub.com/>
Discord App (Comms): <https://discordapp.com/developers>
MFC Discord Server (Comm): <https://discord.gg/Q4Tm872>
FScloud (Multi-Sim Client): <http://www.fscloud.net/>

Credits:

RTMM Team – RTMM Scenery Design and Enhancements

MFC VA Flight System/Tour Designs & Build:

Norm Richards

February 2019